

PATTERNS
1 of 2

FRONT
PIECE

CBPD Shoulder
Armor - Front

- 6 mm EVA foam or thick
leather

back piece should be
connected this far in

RIGHT
SHOULDER

LEFT SHOULDER

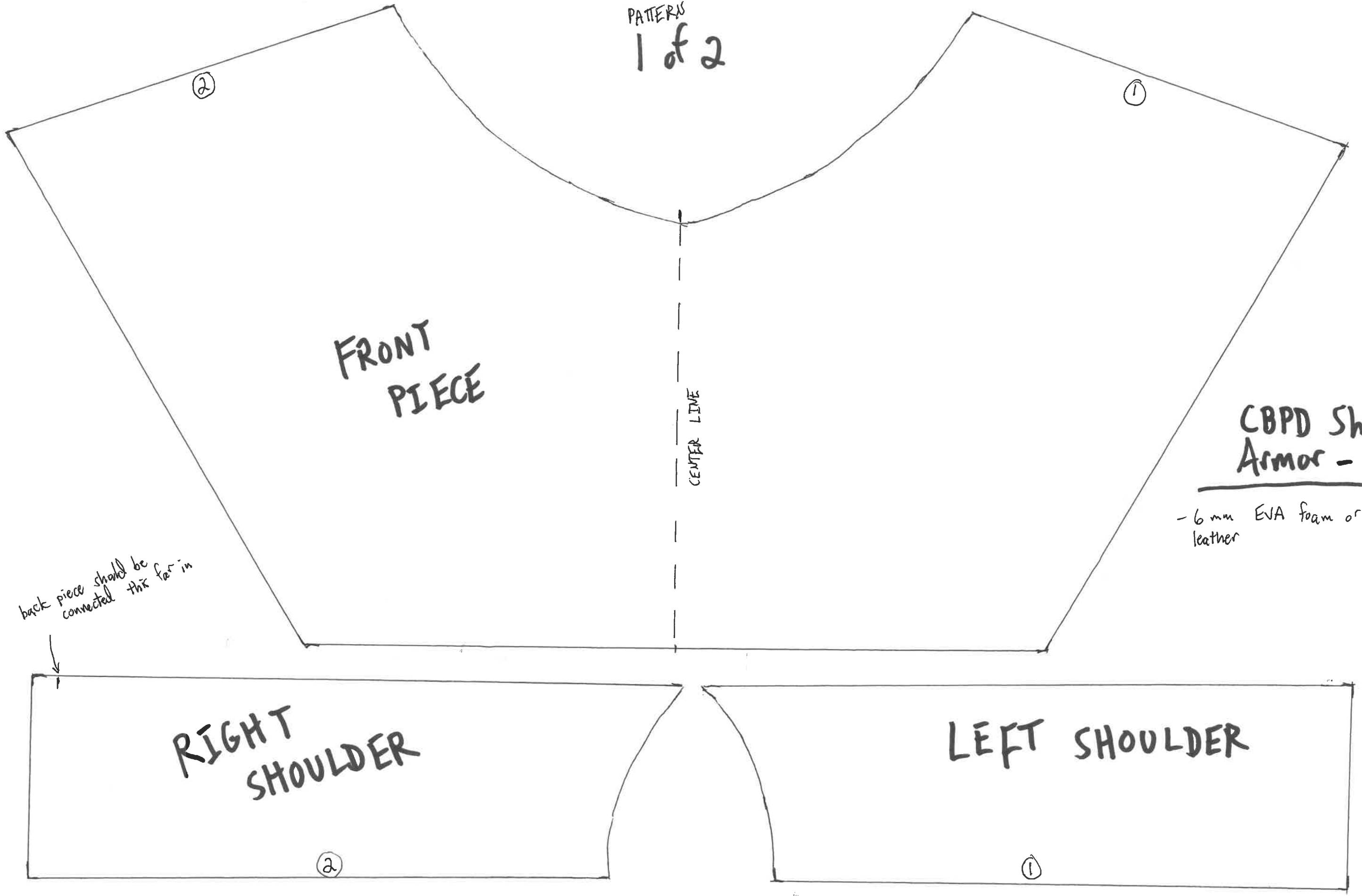
CENTER LINE

2

1

2

1



PATTERN
2 of 2

CBPD Shoulder Armor - Back

- 6 mm EVA foam or thick leather
- white fabric backer to hold all pieces together (contact cement)
- velcro to hold one side to shoulder piece
- rubber coated (if foam), then paint white

VELCRO UNDER HERE TO CONNECT
TO ~~LEFT~~ LEFT SHOULDER PIECE

Center line

